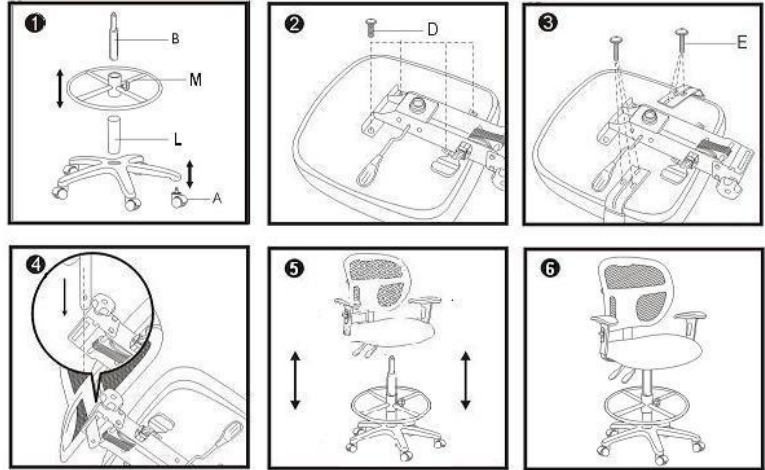
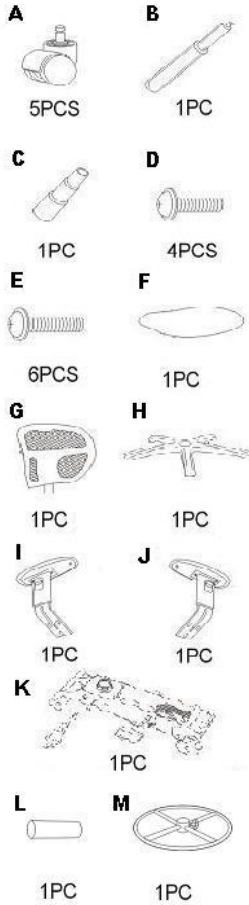


GENERAL ASSEMBLY INSTRUCTIONS

Parts Listing



1. A. Turn the base(H) upside down push the casters(A) into the base.
 B. Put the extender(L) into the base(H).
 C. Place the foot ring(M) on the extender(L).
 D. Put the cylinder(B) into the extender(L) with the fattest part of the cylinder going into the extender.
2. Attach the control mechanism(K) to the seat(F) with the screws lettered D.
3. Attach the arms(I+J) to the bottom of the seat(F) using the screws lettered E.
4. Attach the back(G) to the seat(F).
5. Then you would attach the seat to the cylinder. You would do this by putting the seat down on the cylinder and pressing firmly on it.
6. At this point you should have a complete chair.

ASSEMBLY NOTES:

During assembly, hand tighten screws only. When all screws are in place, you may then tighten all screws completely.

CAUTION: 1. Do not use this chair as a step ladder.

2. Check for loose screws and tighten them anytime.

Made and printed in Taiwan.