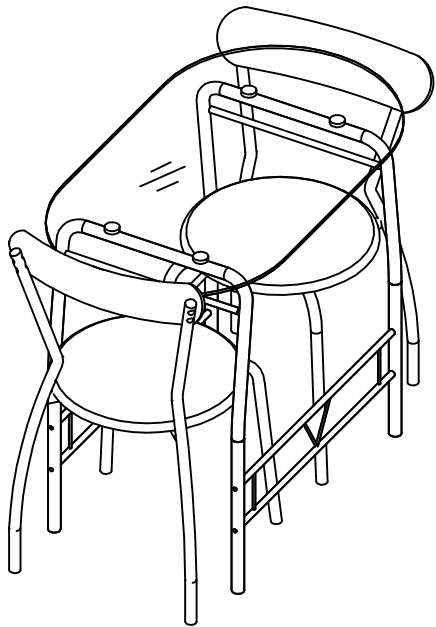


Thank you for your purchase!



3 Piece Bistro Set

ASSEMBLY Before You Begin:

Please identify all component parts and hardware pieces required before you begin. Carefully remove all of the components from the packaging and set aside for assembly. Assemble on a soft surface to prevent scratching during assembly.

Caution:

Tighten all components securely before use. Failure to do so may result in personal injury. DO NOT use any sharp objects to open plastic wrapped components as damage to product or components may result.

Warning:

CHOKING HAZARD - Small Parts. Adult Assembly Required.

DO NOT ALLOW CHILDREN TO CLIMB ON FURNITURE

Serious or fatal injuries can occur from furniture tipping over. You must install Tipping Restraint Hardware (where included) to help prevent the unit from tipping and causing accidental injury, instability, death or damage. The tipping restraint is intended only as a safety measure, it is not a substitute for proper adult supervision.

To help prevent furniture from tipping over it must be permanently attached to the wall. Anti-Tip Safety Wall

Straps suitable for the unit weight and wall materials (if not included) should be purchased and installed.

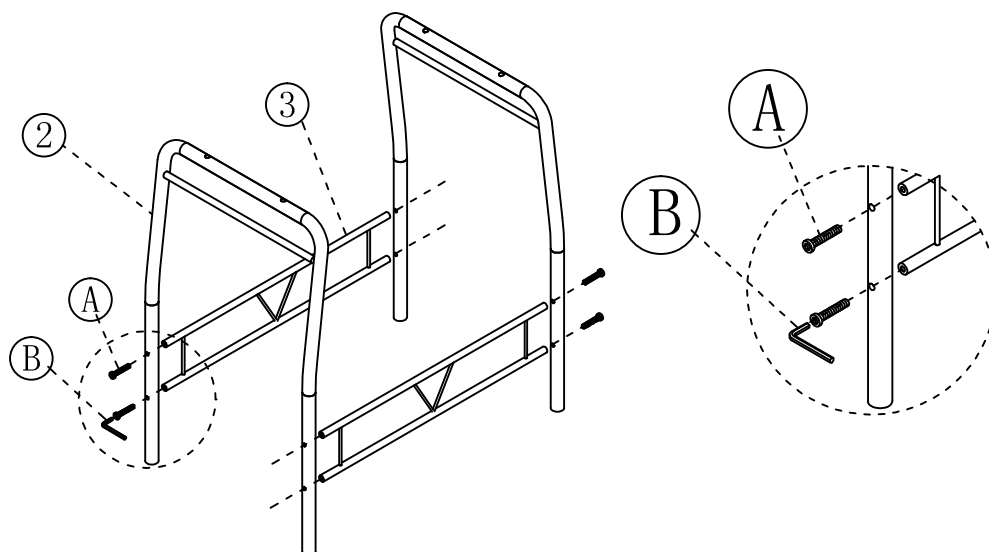
PARTS

1		1PC
2		2PCS
3		2PCS
4		2PCS

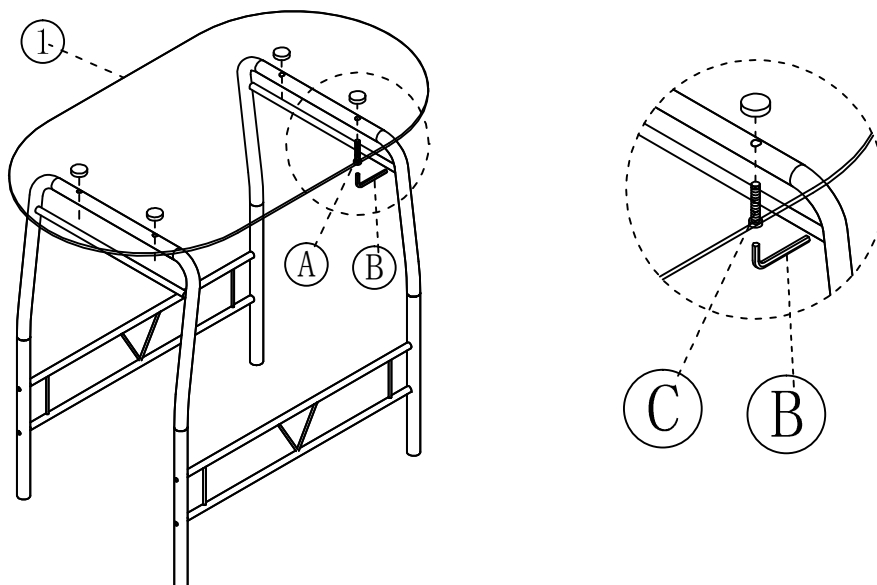
5		2PCS
6		2PCS
7		2PCS

A		26 PCS
B		1 PC
C		4PCS

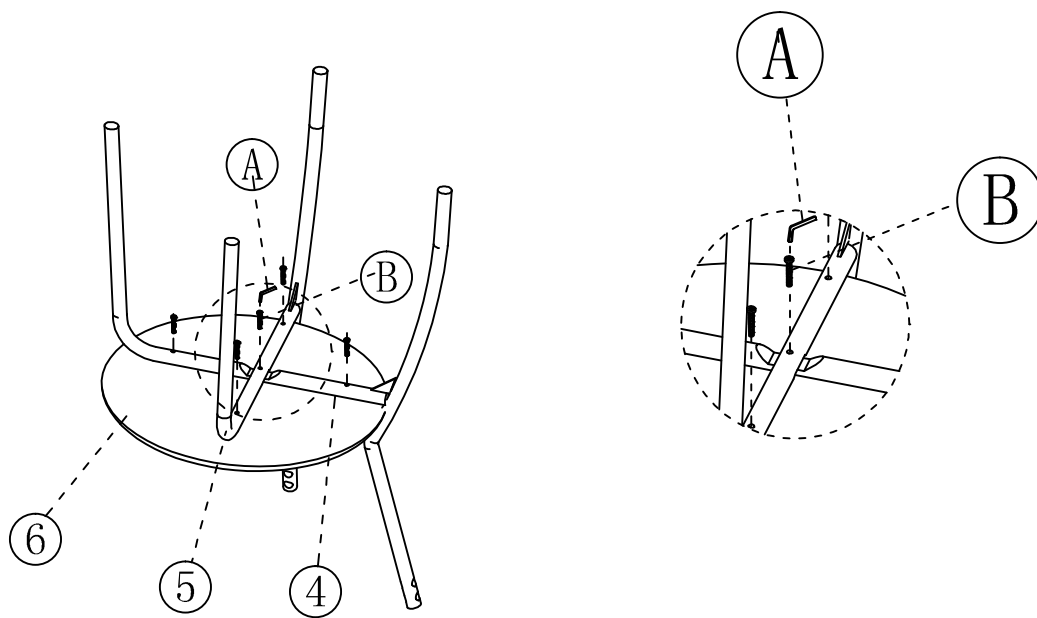
STEP 1



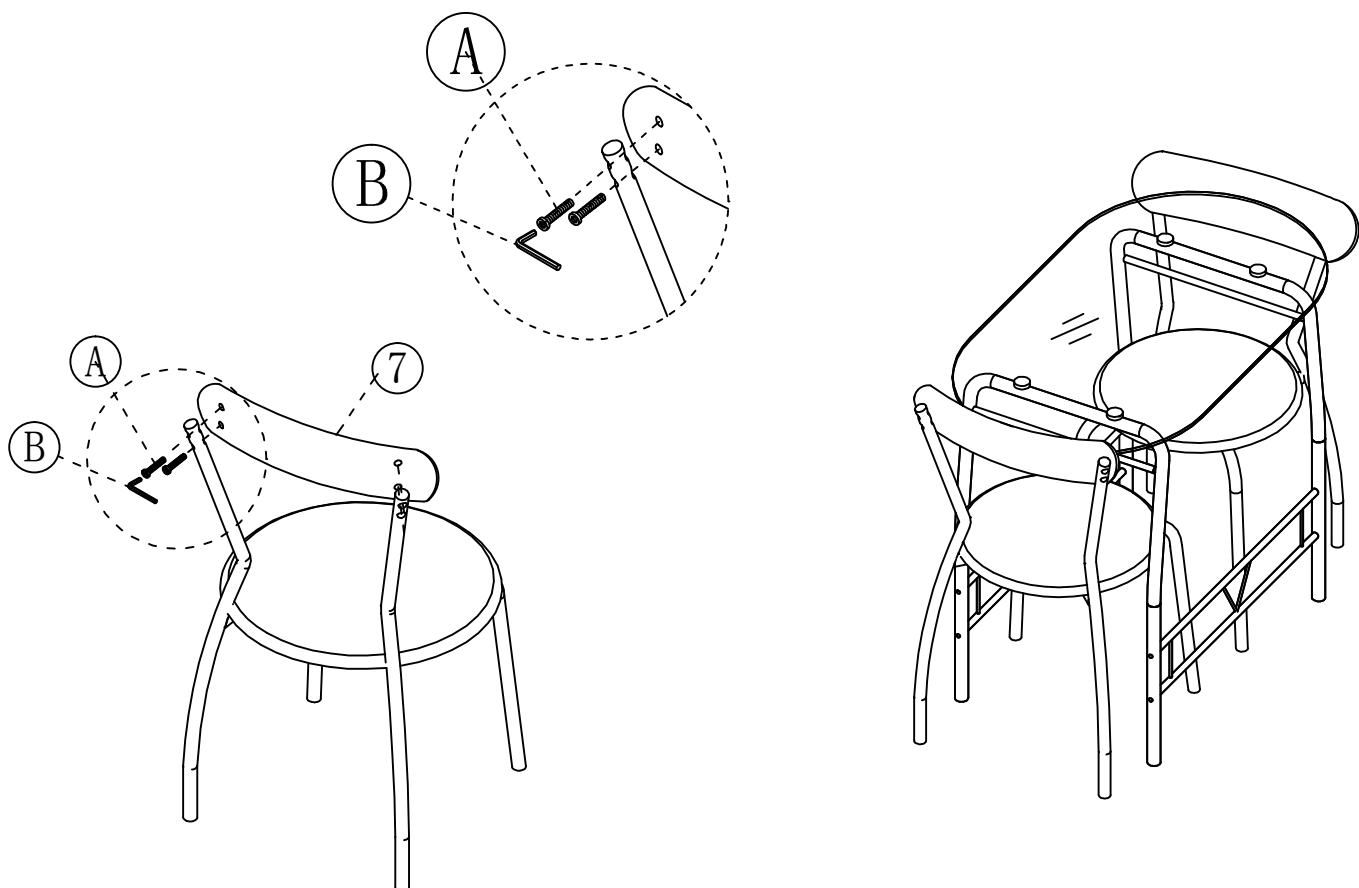
STEP 2



STEP 3



STEP 4



Quality and Safety Guidelines

- Please follow the static and dynamic weight capacity limits provided on these items. If you are unsure of the weight capacities for these products, email us at customerexperience@theubiquegroup.com or call 866-552-2810.
- **TABLE:** Please use this item on a stable, level surface only. All table legs should contact the flooring surface when in use. This item is intended as a table only, do not climb, stand or sit on this item.
- **CHAIR:** Please use this item on a stable, level surface only. All chair legs should contact the flooring surface when in use. This chair is not intended for reclined positions. To prevent accidental tipping, do not push backward or forward while seated.
- Do not use these items if any instability is detected.
- For maintenance instructions and replacement parts, please email us at customerexperience@theubiquegroup.com or call 866-552-2810.
- This table and chair set is intended to be used indoors. They may be used outdoors on a deck or patio during good weather but must be stored indoors.
- For product longevity, product safety and product integrity, protect from extended periods of wet weather and store indoors in a dry location. For additional storage instructions, please email us at customerexperience@theubiquegroup.com or call 866-552-2810.
- Please visit www.theubiquegroup.com for our product warranty details or email us at customerexperience@theubiquegroup.com or call 866-552-2810.